

TRANSFER FABRIC

Transfer Fabric Instructions:

Transfer fabrics can be used for printing on PE and PP materials by thermal transfer printing or laminating.

The printing process is the same as transfer paper, both for PE and for PP materials.

Transfer fabrics can also be laminated. For this purpose they are sewn into shape and used like a tricot stockinette as the first and/or last layer in the laminate.

The printing faces the side that will be visible later.



Best Storage Conditions: Dry, cool, dark place.

Transfer fabric comes in a size of 40" x 60"

Transfer fabric can also be used
for lamination
in prosthetic applications!

TRANSFER FABRIC



BEAR RED
AC-TF1003



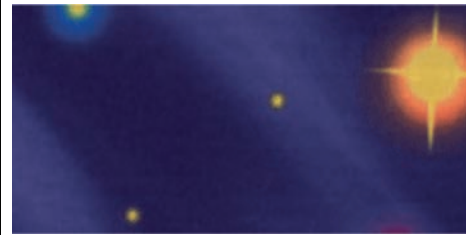
JUMBO
AC-TF1005



TORNADO
AC-TF1013



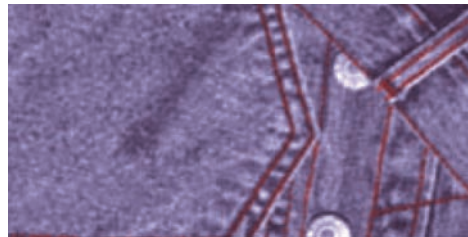
FLY & DRIVE 1
AC-TF1014



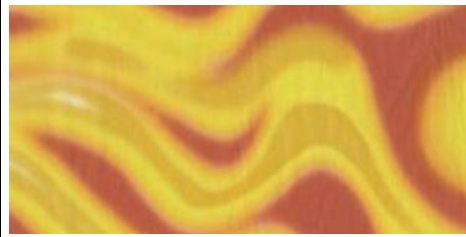
SKY
AC-TF1016



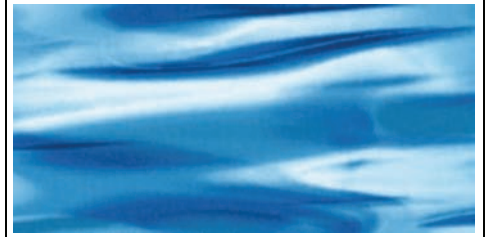
CAMOUFLAGE
AC-TF1025



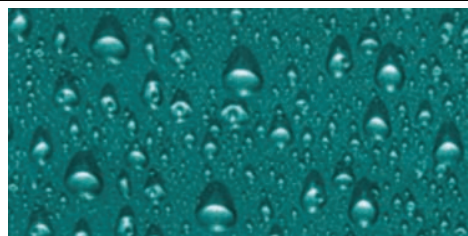
JEANS
AC-TF1030



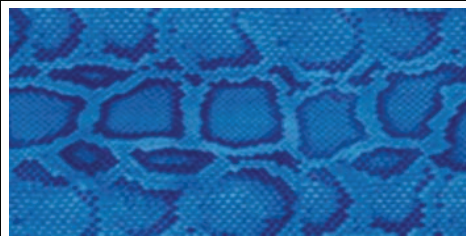
LAVA
AC-TF1037



ICEAGE
AC-TF1050



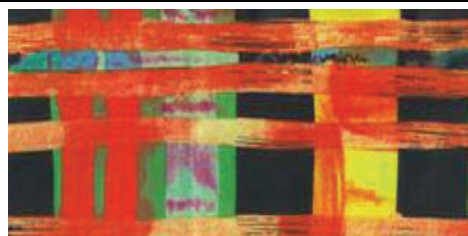
RAINDROP
AC-TF1051



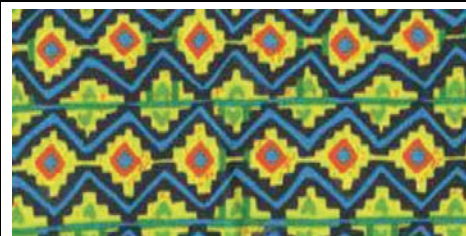
CROCODILE SKIN BLUE
AC-TF1052



RAINBOW
AC-TF3011



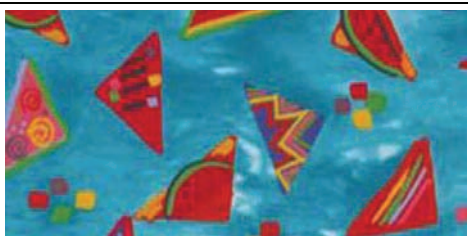
PICASSO
AC-TF3012



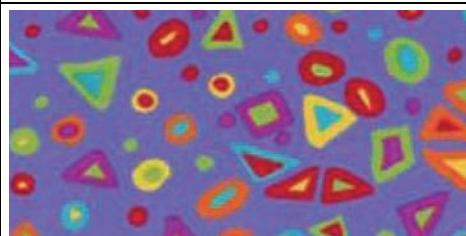
ZICZAG
AC-TF3013



YELLOW MELON
AC-TF3030



BLUE MELON
AC-TF3031



CONFECTIONERY BLUE
AC-TF3032



SAILBOATS
AC-TF3071